

Getting to know the National Palliative Care Program

Professor Jennifer Tieman

CareSearch Director, Flinders University

E: jennifer.tieman@flinders.edu.au

3 simple things

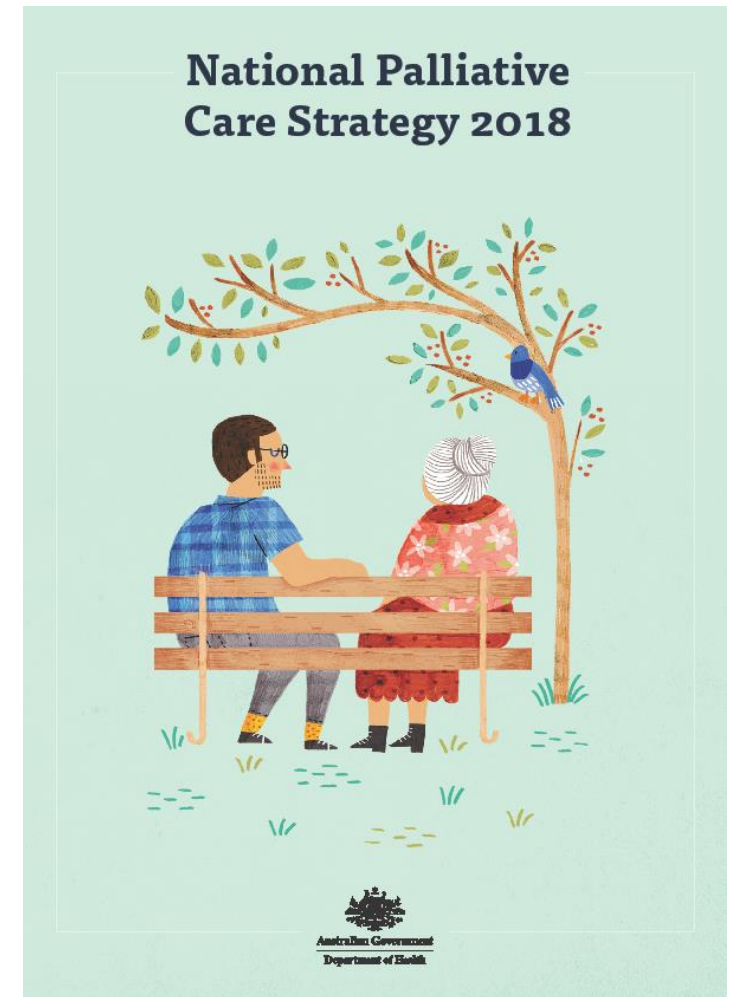
1. Where have the projects come from?
2. What are the projects and what's on offer?
3. Where do I find them and how can I make use of them?

Overarching vision for palliative care in Australia: that people affected by life-limiting illnesses get the care they need to live well.

Outcomes supported by an Implementation Plan and a Monitoring and Evaluation Plan

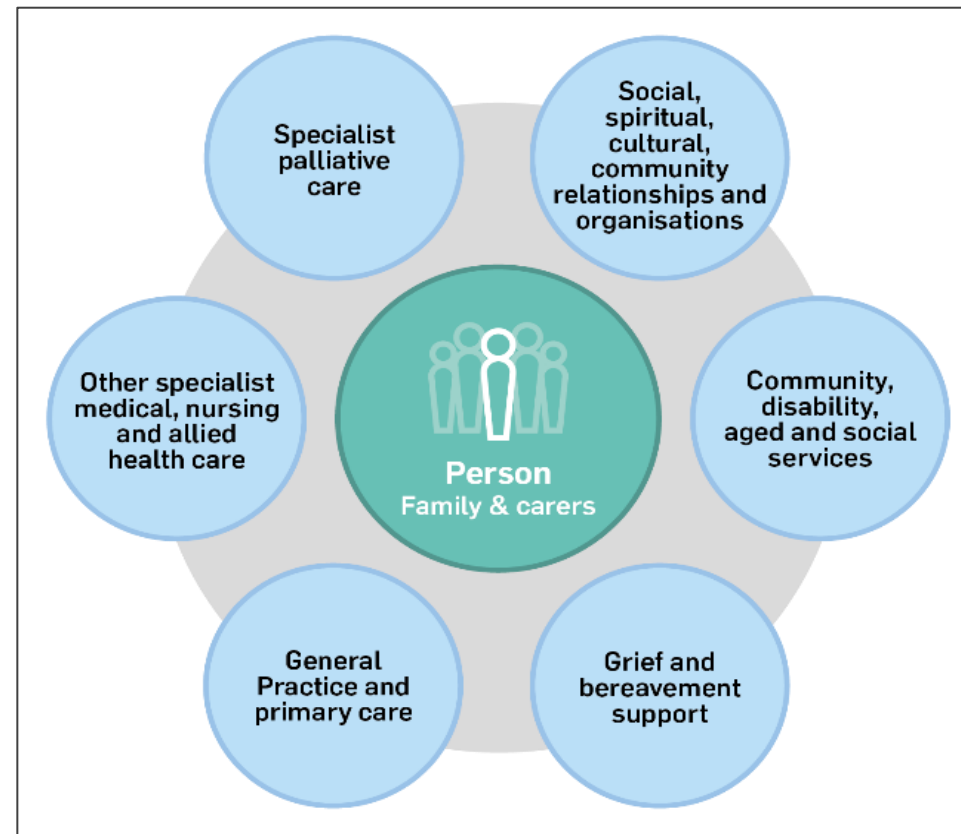
Endorsed by the Australian Health Ministers

Funds a program of projects and initiatives



The seven goals of the strategy

- Understanding
- Capability
- Access and choice
- Collaboration
- Investment
- Data and evidence
- National Governance



Main Initiatives

Greater Choice for At Home Palliative Care measure

Comprehensive Palliative Care in Aged Care Measure

ELDAC: End of Life Directions for Aged Care

Projects

Advance Care Planning Australia

CarerHelp

CareSearch

Caring@Home

Education and assessment for psychosocial and existential wellbeing in palliative care

End of Life Essentials

End of Life Law for Clinicians

Gwandalan National Palliative Care Project

Improving palliative care services for people with an intellectual disability

LGBTIQ+ Health Australia

palliAGED

Palliative Care Australia

Palliative care curriculum for undergraduates (PCC4U)

Palliative care in Australian prisons

Palliative Care online training

Palliative Care Outcomes Collaborative (PCOC)

Program of Experience in the Palliative Approach (PEPA)

Quality of Care Collaborative – Australia

Talking End of Life – with people with intellectual disability (TEL)

The Advance Project



Talking **End of Life**
...with people with intellectual disability



Invest, Challenge, Change #21OPCC

What are you looking for?

Resources for my area of practice

Education

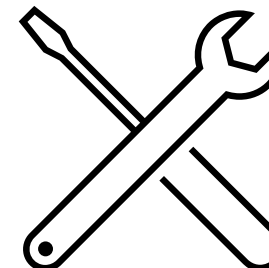
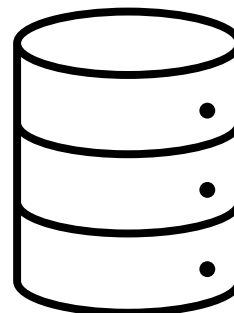
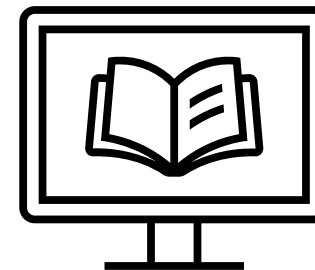
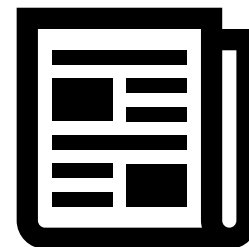
Evidence and Guidelines

Tools, Outcome Measures, Toolkits

Resources for Patients & Families

Apps, technology, databases

Resources around specific needs



I am looking for	SPCS	Primary Care/Community	Hospital	Aged Care	Paediatric
<i>Education</i>	PEPA PCC4U ELLC	PEPA PCC4U ELDAC palliAGED PCOT ELLC	EoLE ELLC	palliAGED ELDAC PEPA ELLC PCC4U PCOT	QuoCCA ELLC PCC4U EoLE
<i>Tools, toolkits & measures</i>	PCOC	PCOC	EoLE	ELDAC PCOC	QuoCCA
<i>Evidence & Research</i>	PCOC CareSearch	CareSearch	CareSearch	CareSearch palliAGED	CareSearch
<i>Patient, Family Carer resources & services</i>	CarerHelp CareSearch	CarerHelp PCA CareSearch	CareSearch CarerHelp	palliAGED	QuoCCA PCA
<i>Apps, Databases & Technology</i>	PCOC PaCSA	palliAGED		ELDAC palliAGED	
<i>Policy</i>	PCA	PCA	PCA	PCA	PCA
<i>Aboriginal and Torres Strait Islander Health</i>		Gwandalan Caring@Home PCA iPEPA			
<i>Specific Needs</i>	CareSearch	CarerHelp (Diversity) Advance (Dementia) CareSearch TEL LGTBIQ+Health Australia	EoLE	ELDAC palliAGED Advance (Dementia)	
<i>Covid 19</i>	PCA CareSearch	CareSearch	CareSearch EoLE	CareSearch ELDAC palliAGED	CareSearch

Exploring Aged Care Education

palliAGED-ELDAC-PEPA-ELLC-PCC4U-PCOT

PALLIATIVE CARE
Online Training
www.palliativecaretraining.com.au

Make a real difference in end-of-life care

Wherever you are located, you can do our free online palliative training course and develop the skills and confidence to care for someone with a life-limiting illness.

Whether you work or volunteer in aged care, acute or primary care, or the community sector, the training will help you to better support people approaching the end of their life.

The training can be completed at a time and place that suits you, and will help ensure that the people you care for at the end of their life will benefit from your experience.

Evidence based, easy to understand training

The palliative care online training is based on the COMROG Guidelines for community based palliative aged care. The training has been developed by experts and is provided in simple, plain English. Through interactive activities, video case studies and easy to understand examples, you will build skills and knowledge.

Over 35,000 people across Australia and internationally have undertaken the training and reported that it has helped them to provide better care and feel more confident as they support clients, friends and family at the end of life.

This training may assist you to meet Continuing Professional Development (CPD) requirements. Please contact AHA for more information.

What does the training cover?

The six online modules have been developed in accordance with best-practice guidelines to help you:

Reflect on the needs of people and their families as they approach the end of life. Build screening and assessment skills. Develop confidence in having end-of-life conversations, especially around advance care planning. Invest in self-care and build resilience.

Connect to a wider network of experts who can support and assist you. Extend knowledge of assessing, treating and managing pain. Develop skills in negotiating and managing the deteriorating client.

Home Care Toolkit

Module 1: Recognise End of Life
Learning Outcomes:
Watching this video will help you to:

- Define end of life
- Recognise the common signs of end of life
- Understand the use of end of life tools: SPIC²™ and Surprise Question

Module 2: Assess Palliative Care Needs
Learning Outcomes:
Watching this video will enable you to:

- Describe the importance of person-centred and holistic assessment
- Identify the four domains of wellbeing used in palliative care assessment
- Recognise the importance of care planning to support end of life care

palliAGED
PALLIATIVE CARE AGED CARE EVIDENCE

Home Australian Content Evidence Centre Practice Centre For the Community About palliAGED

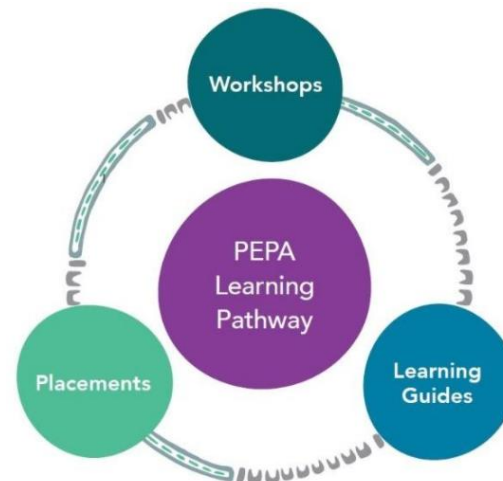
Practice Centre > Practice Resources > palliAGED Introduction Modules

palliAGED Introduction Modules for Aged Care

The palliAGED introduction modules for aged care nurses provide a gateway to training and understanding in palliative care including symptoms and care issues. A companion manual for the introduction Modules is also available. This provides communication tips and more detailed information about selected tools and processes referred to in the modules.

To get started simply select the topic of interest to go to the module and begin.

Introduction to palliative care and palliAGED | Self care | Person-centred care



End of Life Law for Clinicians training

Are you a doctor or medical student?
Want to know more about end of life law?
Complete our **online training** by registering below or attend a **workshop** (program coming soon).

ELLC End of Life Law for Clinicians

Register

Curriculum Blueprint

Enrolled Nurse Toolkit

2018

PCC4U PALLIATIVE CARE QUALIFICATION UNDERSTANDABLE

Funded by the Australian Government Department of Health

Topic 1: Principles of Palliative Care | Topic 2: Communicating with People with Life-limiting Conditions | Topic 3: Principles of Symptom Assessment and Management | Topic 4: Assessment and Management of Pain | Topic 5: Optimising Function in Palliative Care | Topic 6: Terminal Care and Bereavement Support

www.pcc4u.org

I am a

Nurse: CareSearch Nurses Hub, PEPA, palliAGEDnurse, ELLC, EoLE, caring@home

Allied Health Professional: CareSearch Allied Health Hub, EoLE

Doctor: CareSearch GP Hub, Advance, ELLC, EoLE, ELDAC

Careworker: PCC4U, ELDAC, palliAGED, TEL

Student: PCC4U, CareSearch

Manager/Policy Maker: PCA, CareSearch, PCOC

Where can I find all these projects?

Navigate via

Department of Health > What we're doing about palliative care

<https://www.health.gov.au/health-topics/palliative-care/about-palliative-care/what-were-doing-about-palliative-care>

CareSearch > Major Projects

<https://www.caresearch.com.au/tabid/6450/Default.aspx>

How can I use the resources

- Build your own knowledge, skills and capabilities: Sign up for a course, seek a PEPA placement, check out the practice tips
- Share resources with your work team, practice setting and networks. Many projects have downloadable resources you can use.
- Raise palliative care issues within your organisational structures
- Tell clients, residents, patients about resources that can support their care. Many projects have resources you can order to share with patients, carers, families
- Sign up for a newsletter. All projects have one. Pick one that suits your needs.
- Provide feedback. We can make better products, resources , modules you tell how us what worked or if something is missing.
- Make connections during the conference with the projects. We are all friendly.

And if you're not on twitter, now may be the time
to start

@CareSearch

@palliAGED

@Pall_Care_Aus

@ACPAustralia

@PCC4U_team

@EOLessentials

@LGBTIQHealthAu

#21OPCC

#CarerHelp, #PEPA, #TEL